

Eastmond Publishing Ltd (Autograph)

PO Box 46, Oundle, Peterborough, PE8 4JX, UK

Tel: +44 (0)1832 273444

Email: support@autograph-maths.com

Technical Support: +44 (0)151 630 4492

Fax: +44 (0)1832 273529

Web: www.autograph-maths.com

Autograph 3.3 Installation

1. Start the Autograph installer:
 - a. If you have the Autograph installer on CD then insert the CD into your drive. If the CD does not autoboot then click on the CD drive in Finder.
 - b. If you have downloaded the Autograph installer then double-click the disk image (.dmg file) to mount it if it does not do so automatically.
2. Double-click Autograph 3.3.pkg in the Start Screen.

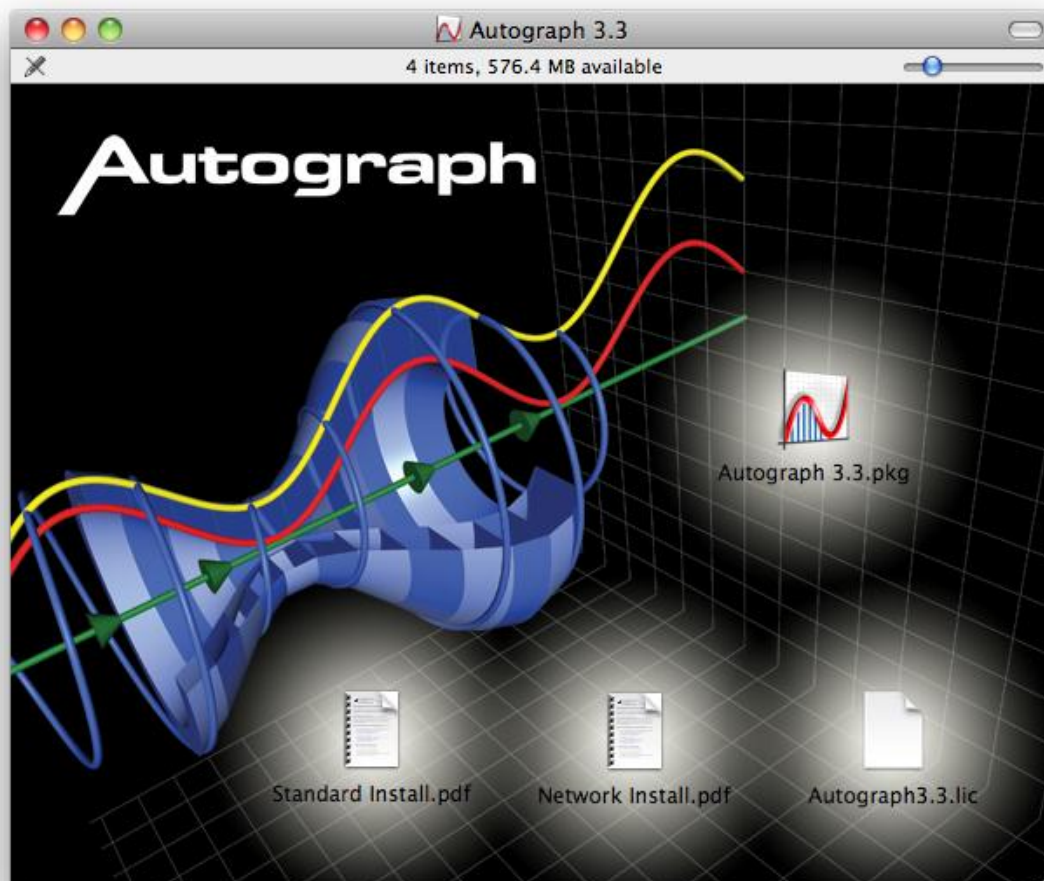


Figure 1. Start screen

3. Click Continue on the Welcome screen in Figure 2.

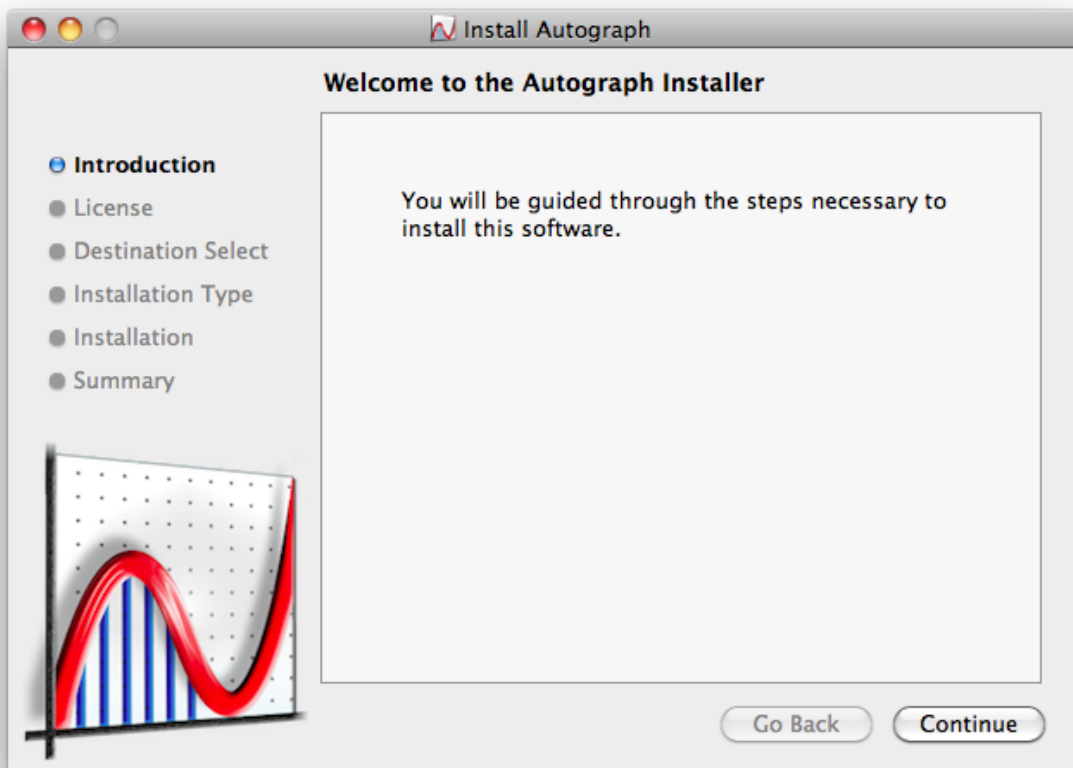


Figure 2. Welcome screen

4. Read and accept the terms in the licence agreement and click Continue.

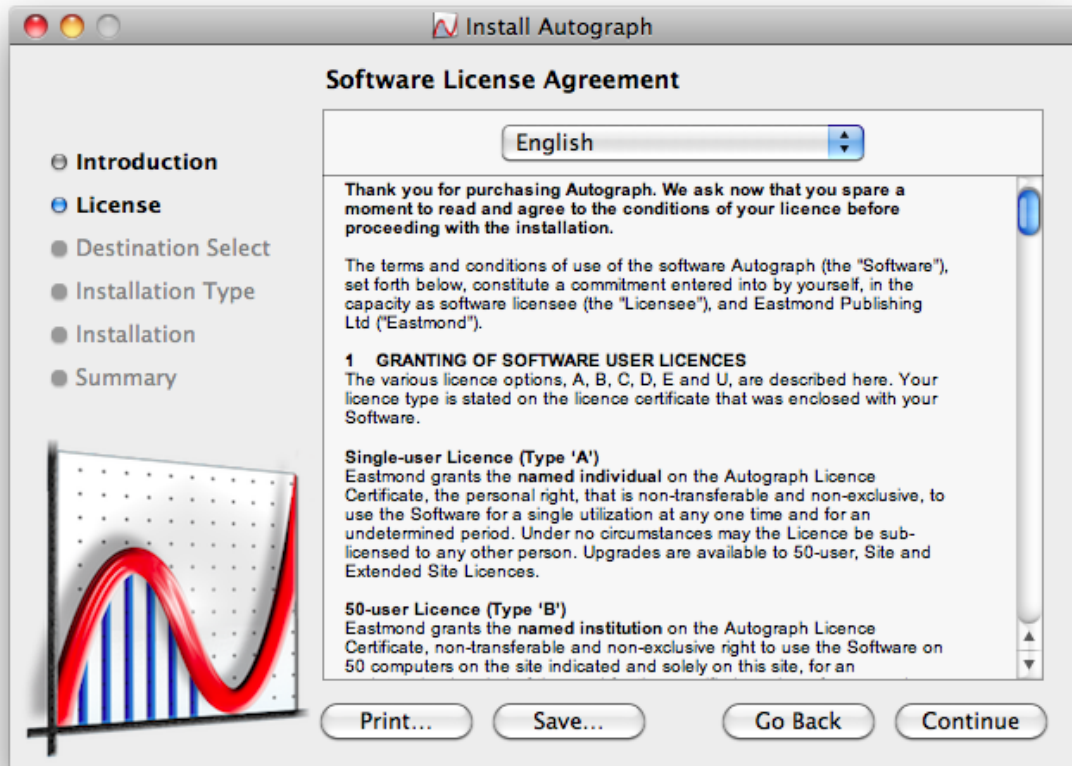


Figure 3. Licence Agreement

5. Select the drive onto which you would like to install Autograph and click Continue.

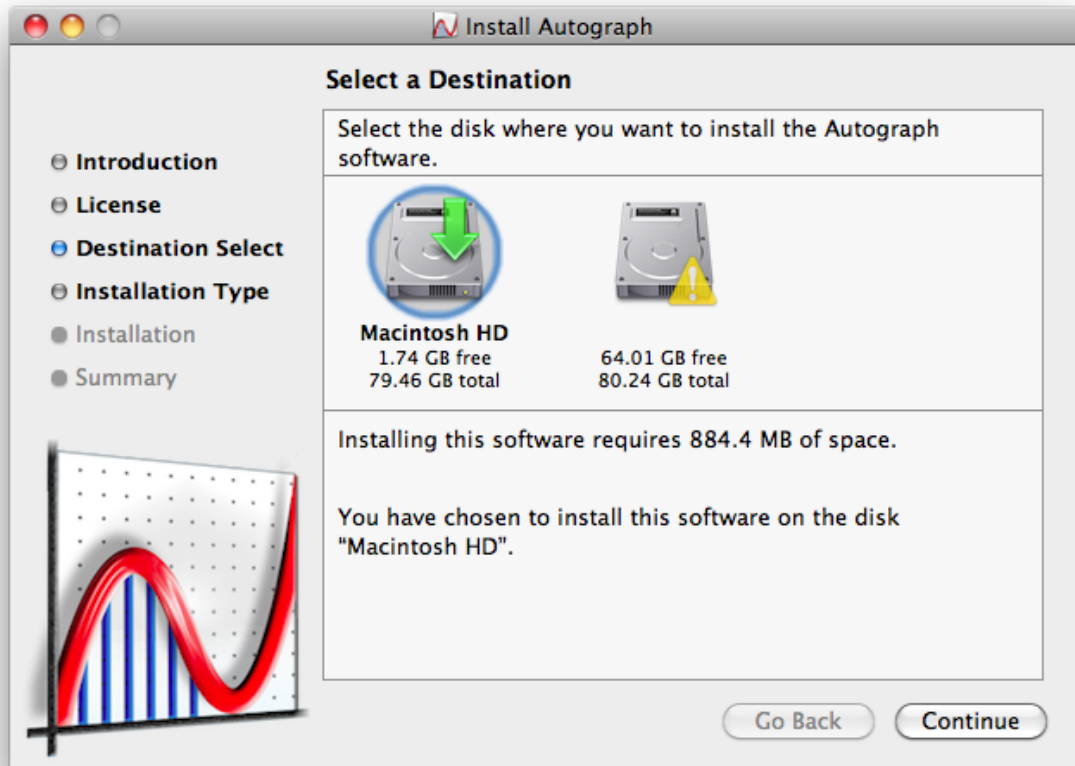


Figure 4. Licence Agreement

6. You are now ready to install Autograph. Click Install. You will be asked for an Administrator password at this stage.

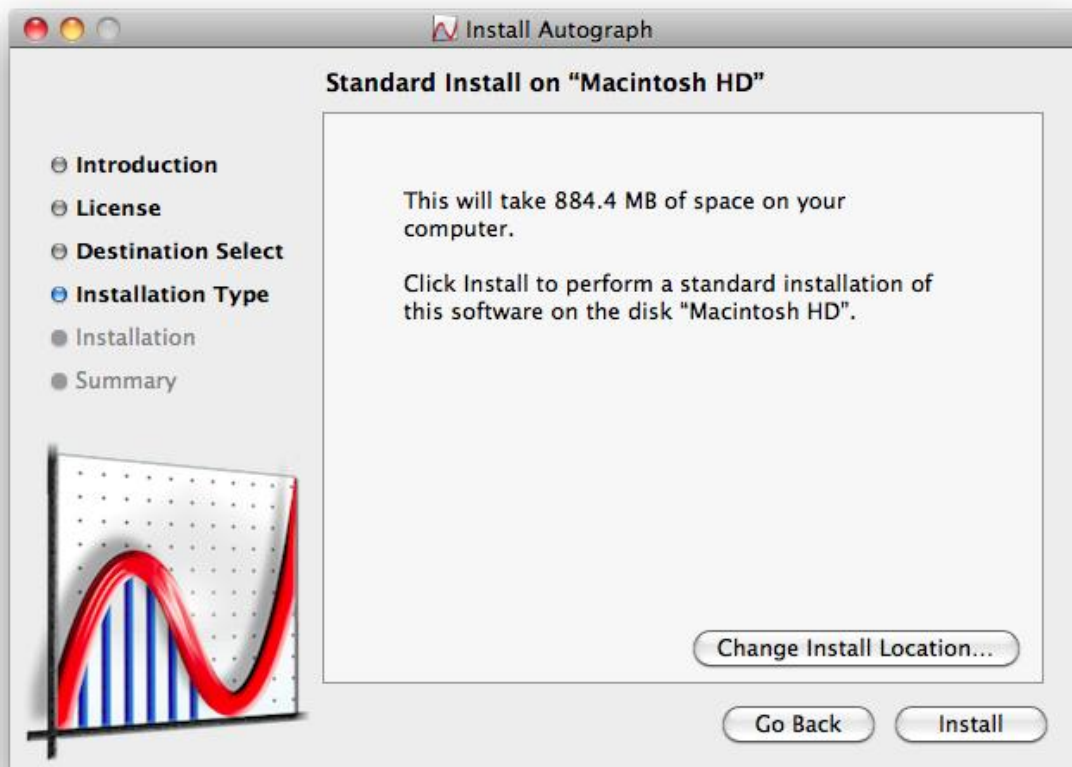


Figure 5. Install Autograph

7. The Installing Autograph dialog will display the progress of the installation.

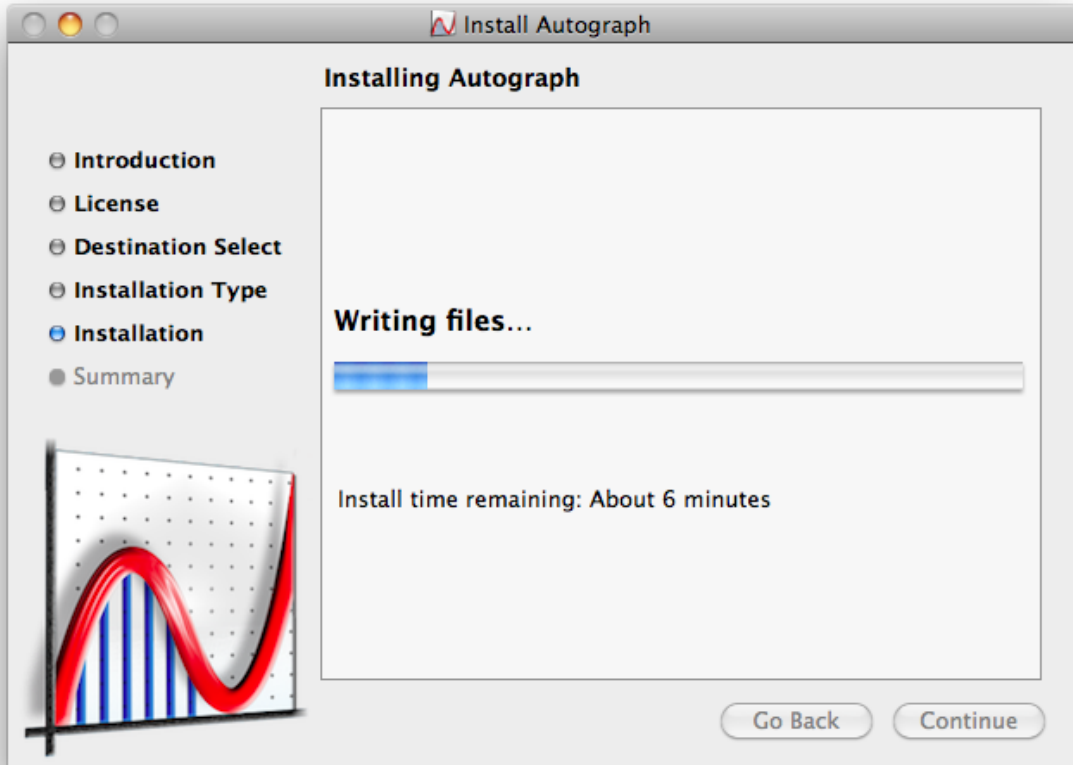


Figure 6. Installing Autograph

- When the installation completes the Installation was successful dialog will appear. Click Close.

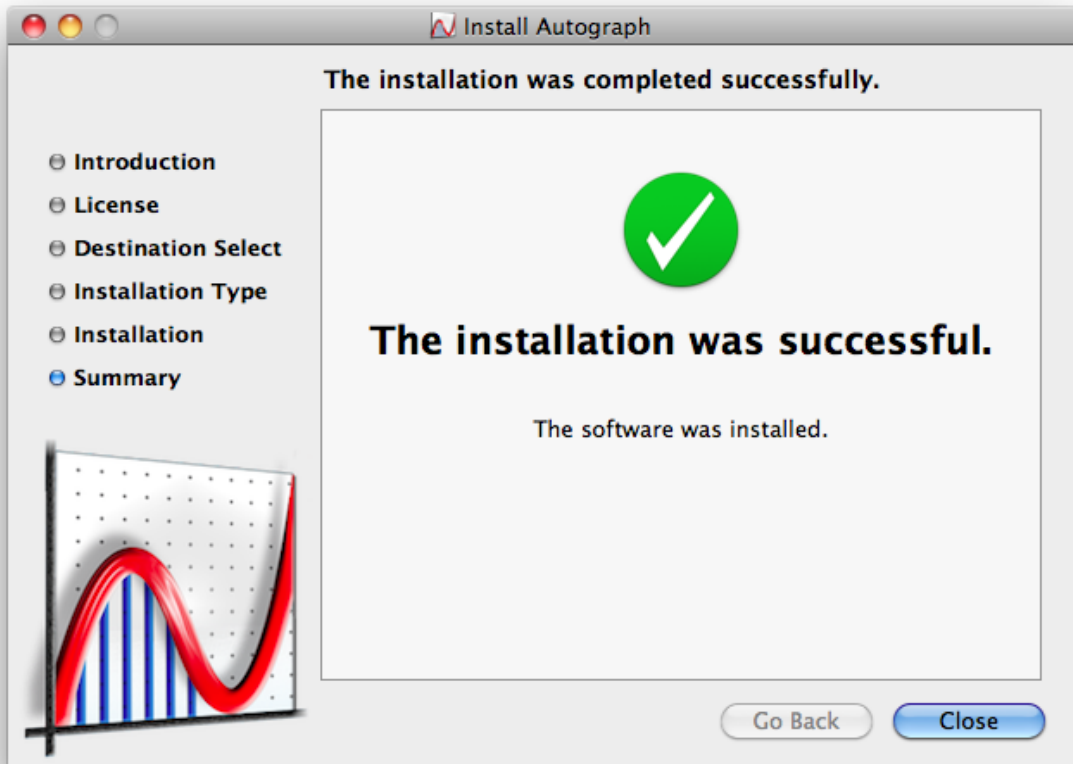


Figure 7. The installation was successful

9. Double-click on the Autograph in the Applications folder. The Activate or Trial Autograph dialog will open, as in Figure 8.

If you are trialing Autograph click Finish and Autograph will open. You then have 30 days in which to evaluate Autograph. Please contact us at support@autograph-maths.com if you would like any help or resources. To upgrade to the full version click Purchase Autograph.



Figure 8. Activate or Trial Autograph

10. Select the appropriate activation option:

Activate for Single User

If you have a single user licence.

Activate for Institution

If you have a school licence, select this option and the appropriate sub-option.

Teacher Computer at Home

If installing on a teacher's computer that will be used at home.

Student Computer at Home

If installing on a student's computer that will be used at home. This is only available with the Extended School Site Licence.

Single Computer at Institution (not on Network)

If installing on a school computer that will not always be connected to the network.

Network

If you have installed Autograph on a network and need to activate the shared licence file. Please refer to the separate network installation guide.

11. Enter your Name, Institution (if applicable), Serial Number or ID, and Email. For Teacher Computer at Home and Student Computer at Home installations the email address must be unique to that teacher or student. Click Activate via Web. The computer must be connected to the internet for this to be successful.

Activate or Trial Autograph

Activation Options

Trial Autograph (29 days to go) Purchase Autograph

Activate for Single User

Activate for Institution

Teacher Computer at Home

Student Computer at Home

Single Computer at Institution (not on Network)

Network

Name:

Institution:

Serial Number:

Email:

Licence Type: 30-day Trial

Status: Trial Version Active

Activate via Web Activate by Email Finish

Figure 9. Entering licence details

12. In the Web Activation dialog click Activate now.

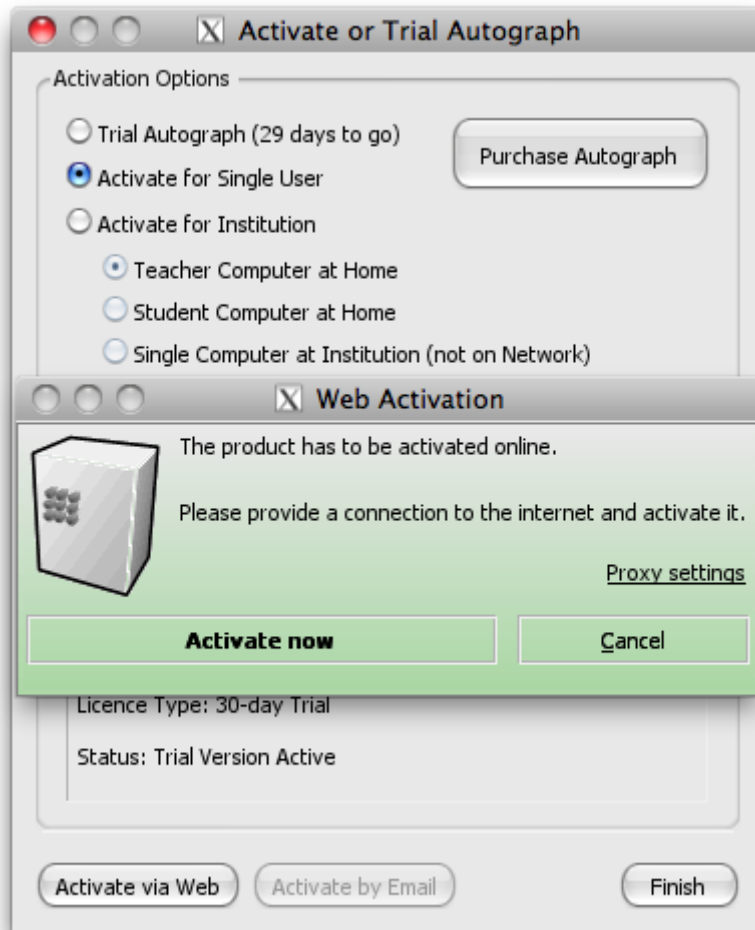


Figure 10. Web Activation

13. The Activation Progress dialog will appear for a few seconds.

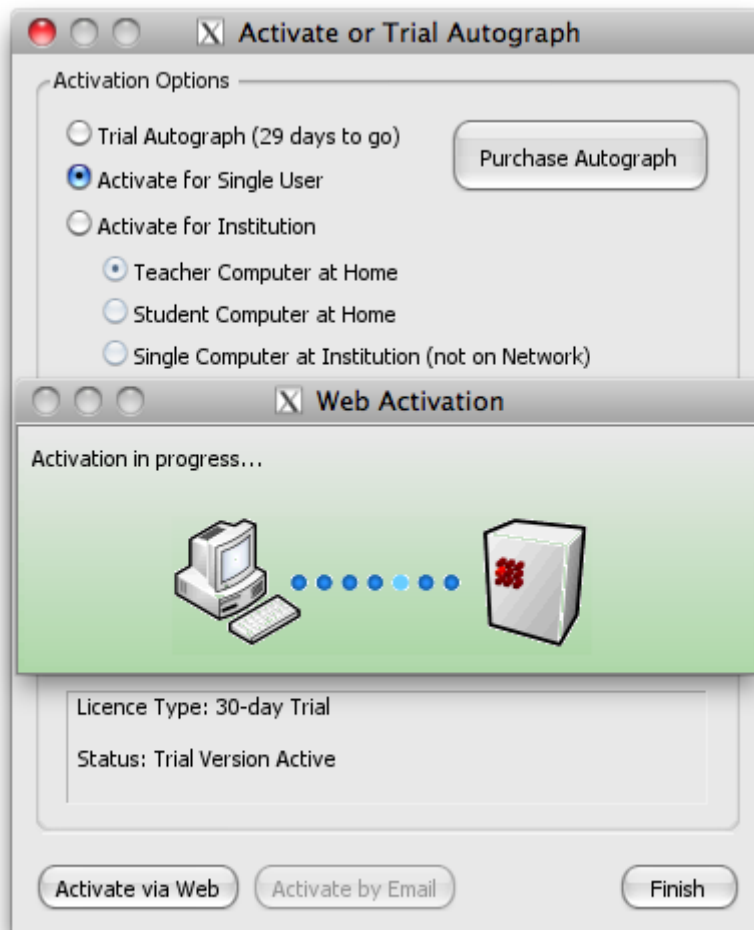


Figure 11. Activation in progress...

14. When the activation succeeds you will see the Online Activation was successful dialog. Click Close and then Finish and you will have completed the installation of Autograph.

If the activation was not successful check your internet connection and try again.

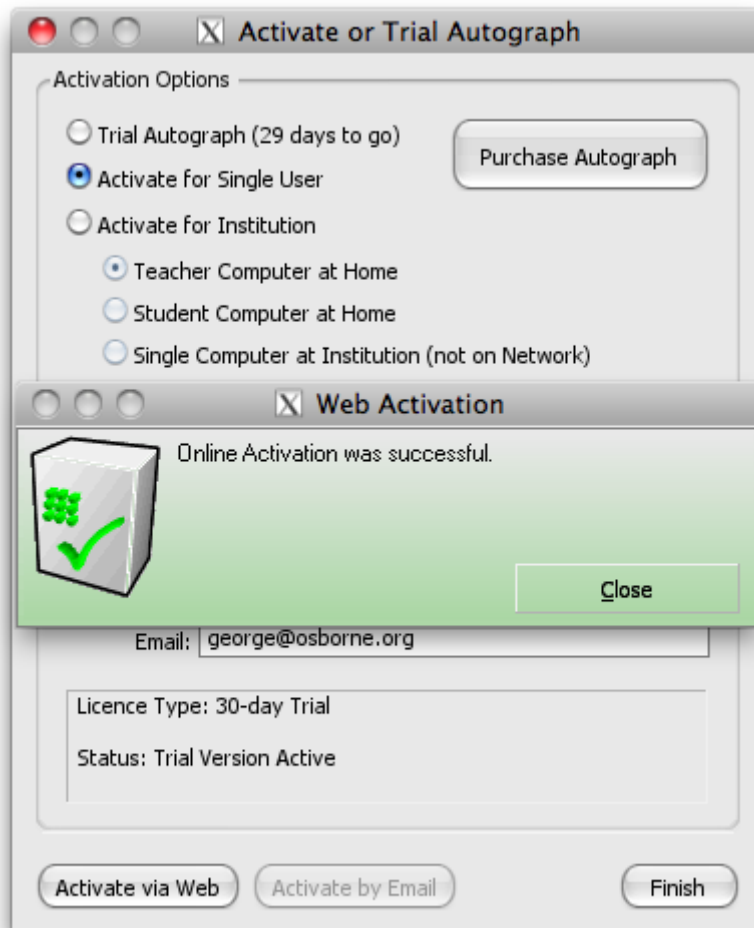


Figure 12. Online Activation was successful